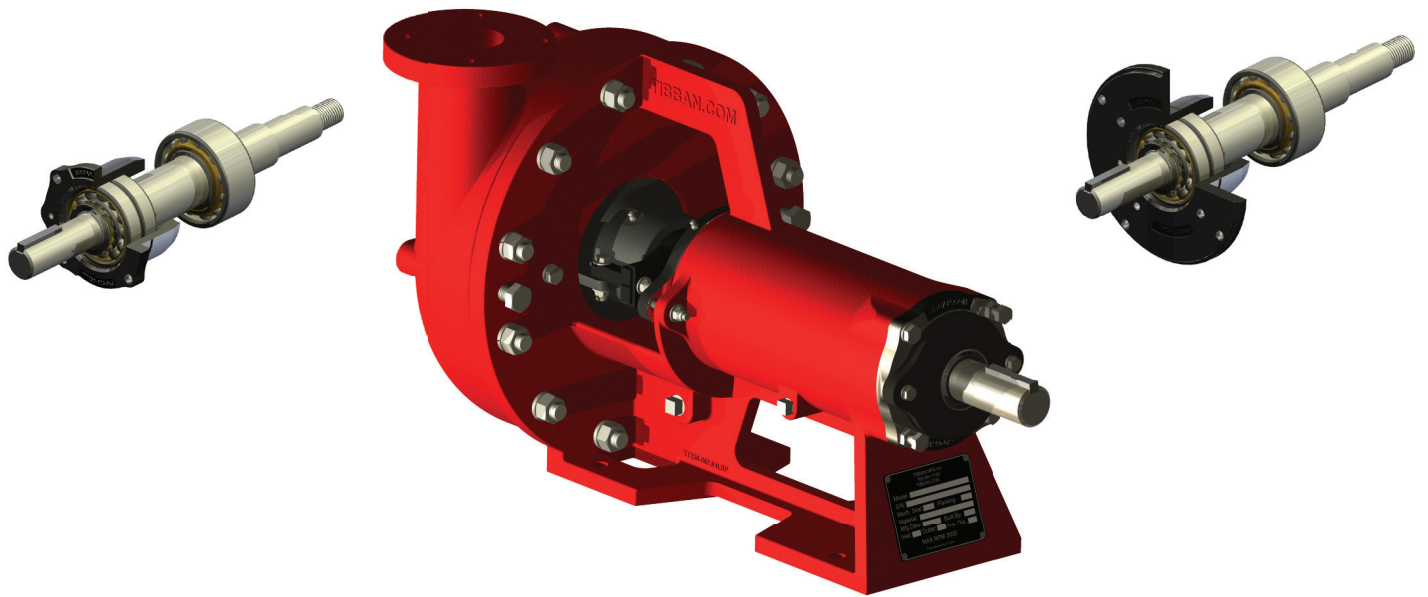


# 250 Centrifugal Pump



The concentric housing is 35% thicker for extra strength and extended service life and reduces the radial load of the bearings. Open-vaned impeller is designed to reduce turbulence, eliminate recirculation, lower radial and thrust load, and provide a smooth flow of fluids. The larger diameter shaft gives heavy-duty performance with minimum shaft deflection. Heavy-duty outboard bearing assembly consist of a pair of angular contact bearings with high thrust load rating and zero end play. The heavy-duty inboard bearing is a double row ball-bearing with high radial load rating to compensate for the larger size impeller and heavy-duty applications. The oil bath lubrication system is designed with a larger oil reservoir, that provides free circulation of oil and better heat dissipation for longer bearing life.

