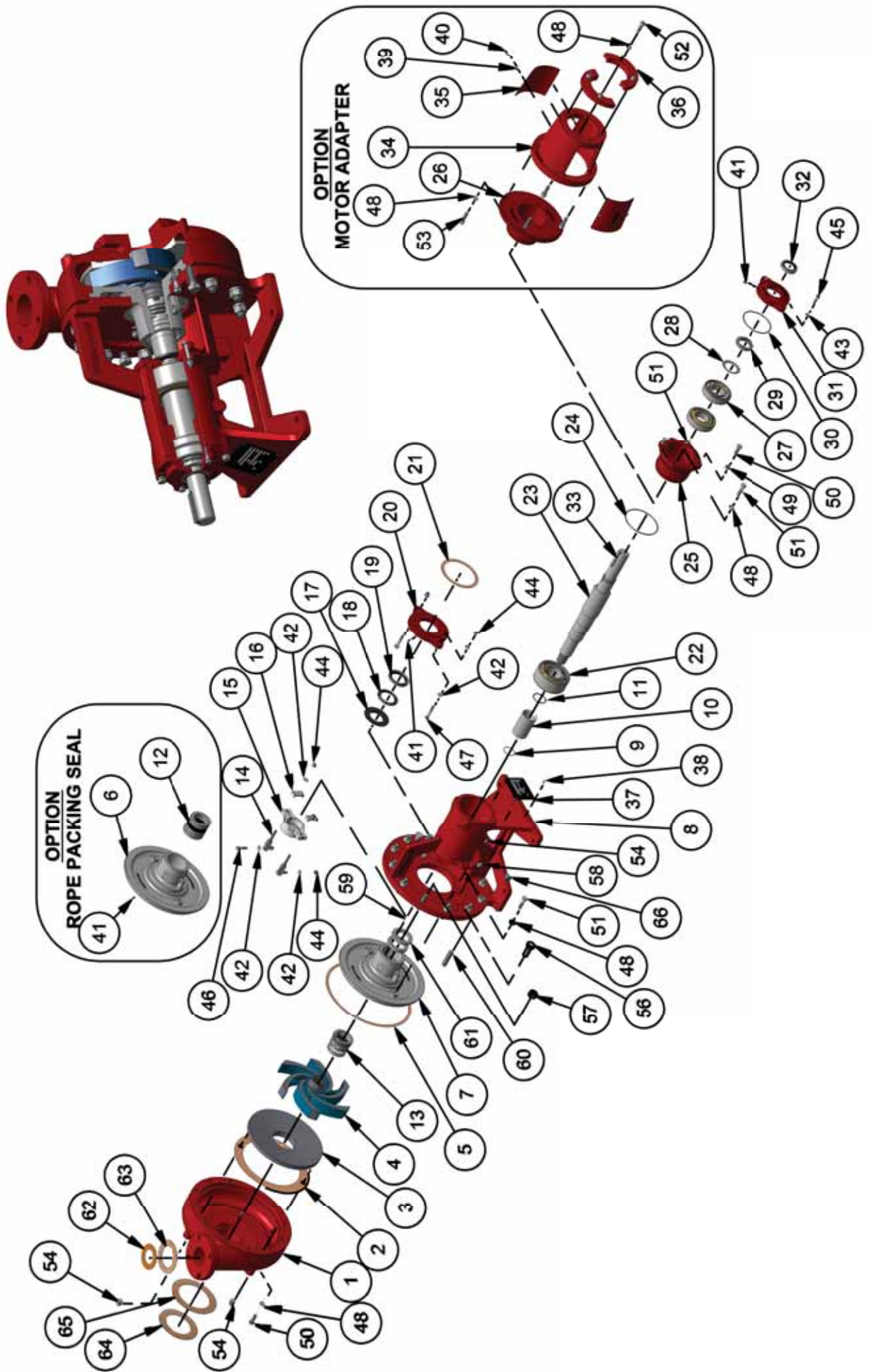


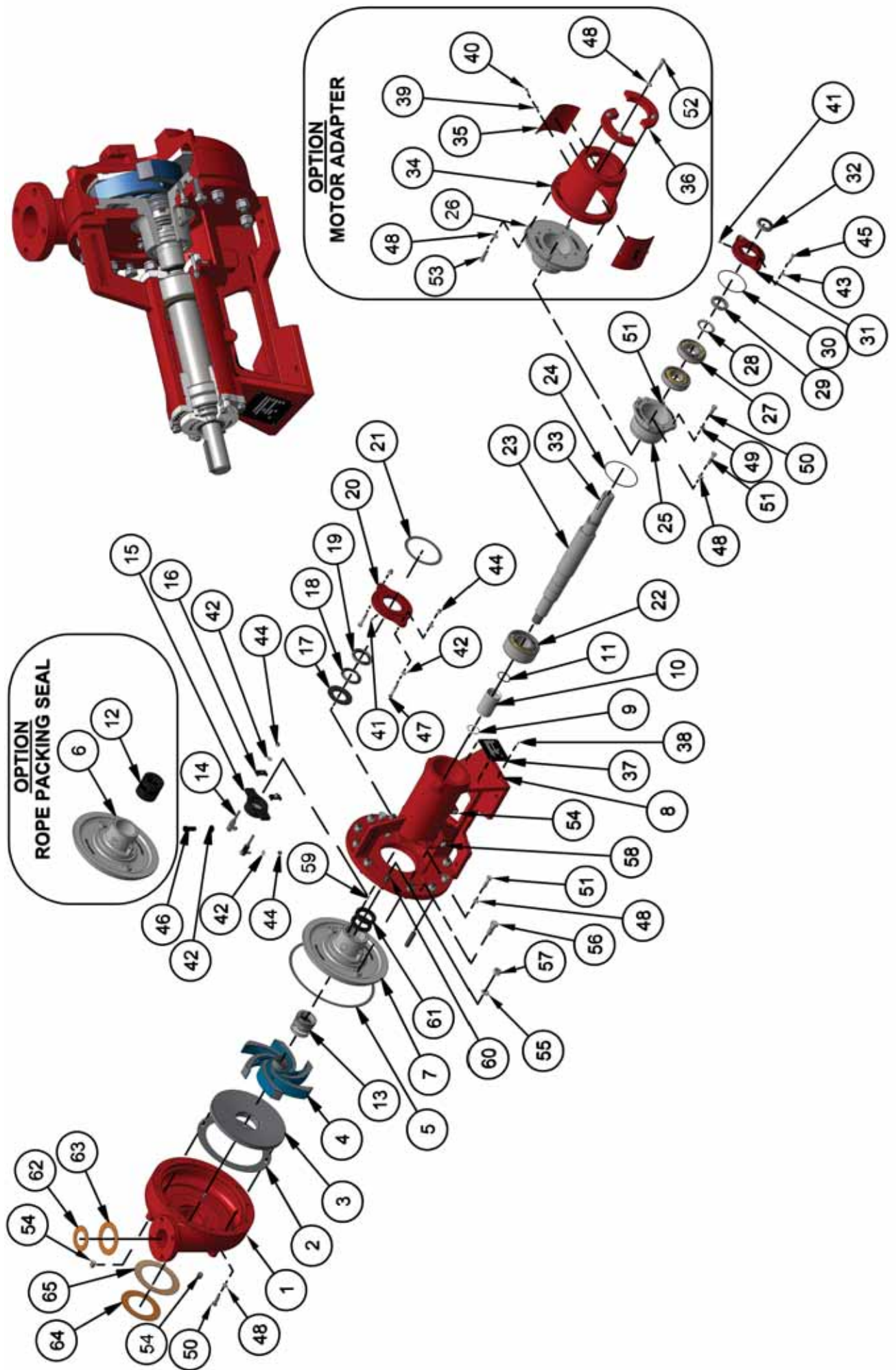
250 Short Body Pump Assembly



250 Pump Assembly (Short Body) Parts List			Description		Material
Item	Qty	Part Number	Description		Material
Standard Pump Selection					
2	1	TT250-002-12CD-150	Housing Wear Plate Gasket		PTFE#A1550
5	1	TT250-005-12T-150	Stuffing Box Gasket		PTFE#A1550
5	1	TT250-005-12T	Stuffing Box Gasket (Optional)		PTFE#A1550
8	1	TT250-007-04Y	Short Body Pedestal		Ductile Iron
9	1	TT250-008-15	Impeller to Seal Sleeve O-Ring		Buna-n
10	1	TT250-009-08	Seal Sleeve		Stainless Steel
11	1	TT250-010-15	Seal Sleeve to Shaft O-Ring		Buna-n
14	2	TT250-012-06	Packing Gland Bolt		Steel
15	2	TT250-013-06	Packing Gland		Steel
16	2	TT250-014-06	Packing Gland Lock		Steel
17	1	TT250-015-15	Splasher Ring		Buna-n
18	1	TT250-016-16	Primary Exclusion Seal		NBR Nitrile Rubber and Steel
19	1	TT250-017-16	Primary Grease Seal		NBR Nitrile Rubber and Steel
20	1	TT250-018-04	Primary Bearing Cover		Ductile Iron
21	1	TT250-019-12-150	Primary Bearing Cover Gasket		PTFE#A1550
22	1	TT250-020-06	Primary Bearing		Steel
23	1	TT250-021-08Y	Short Body Shaft		Stainless Steel
24	1	TT250-022-15	Pedestal to Secondary Bearing Sleeve O-Ring		Buna-n
25	1	TT250-023-04T	Secondary Bearing Sleeve Stub Shaft		Ductile Iron
27	2	TT250-024-06	Secondary Bearing		Steel
28	1	TT250-025-06	Secondary Bearing Lock Washer		Steel
29	1	TT250-026-06	Secondary Bearing Lock Nut		Steel
30	1	TT250-027-15	Secondary Bearing Sleeve to Secondary Bearing Cover O-Ring		Buna-n
31	1	TT250-028-04	Secondary Bearing Cover		Ductile Iron
32	1	TT250-029-16	Secondary Grease Seal		NBR Nitrile Rubber and Steel
33	1	TT250-030-06	Shaft Key		Steel
37	1	TT006	Pump Serial Plate		Aluminum
38	4	MPH-P-0001	Protruding Head Drive Pin Blind Rivet 1/8"		Aluminum
41	2	MPH-G-0001	Lubricating Grease Nipple, (Zerk) 1/4"		Stainless Steel
42	10	MPH-W-00004	Washer, 3/8"		Steel
43	2	MPH-W-00005	Lock Washer, 3/8"		Steel
44	6	MPH-N-00010	Nylock Hex Nut, 3/8"		Steel
45	2	MPH-S-00007	Hex Head Cap Screw, 3/8"		Steel
46	2	MPH-S-00002	Hex Head Cap Screw, 3/8"		Steel
47	2	MPH-S-00008	Hex Head Cap Screw, 3/8"		Steel
49	2	MPH-N-00007	Hex Jam Nut, 1/2"		Steel
48	8	MPH-W-00012	Lock Washer, 1/2"		Steel
50	6	MPH-B-00010	Hex Bolt, 1/2"		Steel
51	3	MPH-B-00008	Hex Bolt, 1/2"		Steel
54	2	MPH-U-00001	Square Head Pipe Plug, 1/2"		Steel
56	2	MPH-B-00014	Hex Bolt, 3/4"		Steel
57	12	MPH-N-00004	Lock Nut, 3/4"		Steel
58	1	MPH-U-00002	Square Head Pipe Plug, 3/4"		Steel
60	12	MPH-D-00002	Stud, 3/4"		Steel
62	1	TT047	2" Flange Gasket		PTFE#A1550
63	1	TT048	3" Flange Gasket		PTFE#A1550
64	1	TT049	4" Flange Gasket		PTFE#A1550
65	1	TT050	5" Flange Gasket		PTFE#A1550
66	1	MP032713CB-1	Pump Vent, 1/2"		Nylon 6/6

250 Pump Assembly (Short Body) Parts List (Continued)			Description		Material
Item	Qty	Part Number	Description		Material
2 X 3 Housing, Wear Plate and Impeller Selection - Standard or Hardened					
Standard Option					
1	1	TT250-001-23-04	250 Pump RH - 2 X 3 Housing		Ductile Iron
3	1	TT250-003-23-04	250 Pump - 2 X 3 Wear Plate		Ductile Iron
4	1	TT250-004-23-04	250 Pump RH - 2 X 3 X 13 Impeller		Ductile Iron
Hardened Option					
1	1	TT250-001-23-07	250 Pump RH - 2 X 3 Housing		CR26 58HRC
3	1	TT250-003-23-07	250 Pump - 2 X 3 Wear Plate		CR26 58HRC
4	1	TT250-004-23-07	250 Pump RH - 2 X 3 X 13 Impeller		CR26 58HRC
3 X 4 Housing, Wear Plate and Impeller Selection - Standard or Hardened					
Standard Option					
1	1	TT250-001-04	250 Pump RH - 3 X 4 Housing		Ductile Iron
3	1	TT250-003-04	250 Pump - 3 X 4 Wear Plate		Ductile Iron
4	1	TT250-004-04	250 Pump RH - 3 X 4 X 13 Impeller		Ductile Iron
Hardened Option					
1	1	TT250-001-07	250 Pump RH - 3 X 4 Housing		CR26 58HRC
3	1	TT250-003-07	250 Pump - 3 X 4 Wear Plate		CR26 58HRC
4	1	TT250-004-07	250 Pump RH - 3 X 4 X 13 Impeller		CR26 58HRC
4 X 5 Housing, Wear Plate and Impeller Selection - Standard or Hardened					
Standard Option					
1	1	TT250-001-45-04	250 Pump RH - 4 X 5 Housing		Ductile Iron
3	1	TT250-003-45-04	250 Pump - 4 X 5 Wear Plate		Ductile Iron
4	1	TT250-004-45-04	250 Pump RH - 4 X 5 X 14 Impeller		Ductile Iron
Hardened Option					
1	1	TT250-001-45-07	250 Pump RH - 4 X 5 Housing		CR26 58HRC
3	1	TT250-003-45-07	250 Pump - 4 X 5 Wear Plate		CR26 58HRC
4	1	TT250-004-45-07	250 Pump RH - 4 X 5 X 14 Impeller		CR26 58HRC
Seal Selection - Rope Packing or Mechanical					
Rope Packing Seal Option - Standard or Hardened Option					
6F	1	TT250-006-04R	250 Pump Rope Packing Stuffing Box		Ductile Iron
6H	1	TT250-006-07R	250 Pump Rope Packing Stuffing Box		CR26 58HRC
12H	1	TT250-011-11R	250 Pump Rope Packing Kit		Graphite Yarn and Plastic
Mechanical Seal Option - Standard or Hardened Option					
7@	1	TT250-006-04S	250 Pump Mechanical Seal Stuffing Box		Ductile Iron
7@	1	TT250-006-07S	250 Pump Mechanical Seal Stuffing Box		CR26 58HRC
13@	1	TT250-011-10S	250 Pump Mechanical Seal		Steel
59@	1	MPH-P-00002	Slotted Spring Roll Pin, 1/8"		Aluminum
61@	2	TT250-011-16A	Rope Packing		Graphite Yarn
Motor and Adapter Option					
26&	1	TT250-023-04U	250 Pump Secondary Bearing Sleeve Motor Mount Adapter		Ductile Iron
34&	1	TT250-031-04V	250 Pump SAE 4 Bolt Motor Adapter		Ductile Iron
35&	2	TT250-032-01V	250 Pump SAE 4 Bolt Motor Mount Adapter Hub Access Cover		Aluminum
39&	4	MPH-W-00003	Lock Washer, 1/4"		Steel
40&	4	MPH-S-00006	Hex Head Cap Screw, 1/4"		Steel
41&	3	MPH-G-00001	Lubricating Grease Nipple, (Zerk) 1/4"		Stainless Steel
48&	8	MPH-W-00012	Lock Washer, 1/2"		Steel
53&	4	MPH-B-00013	Hexagon Socket Cap Bolt, 1/2"		Steel
36&	2	TT250-033-04V	250 Pump SAE 4 Bolt Motor Mount Adapter Breakaway Coupling		Steel
52&	4	MPH-B-00012	Hexagon Socket Bolt, 1/2"		Steel
Options Reference:					
#	Used on Pumps Equipped with Rope Packing Seal Option Only				
@	Used on Pumps Equipped with Mechanical Seal Option Only				
&	Used on Pumps Equipped with Motor Adapter Option Only				

250 Long Body Assembly



250 Pump Assembly (Long Body) Parts List			Description	Material
Item	Qty	Part Number	Description	Material
Standard Pump Selection				
2	1	TT250-002-12CD-150	Housing Wear Plate Gasket	PTFE/Al550
5	1	TT250-005-12T-150	Stuffing Box Gasket	PTFE/Al550
5	1	TT250-005-12T	Stuffing Box Gasket (Optional)	PTFE/Al550
8	1	TT250-007-04YLPB	Long Body Pedestal	Ductile Iron
9	1	TT250-008-15	Impeller to Seal Sleeve O-Ring	Buna-n
10	1	TT250-009-08	Seal Sleeve	Stainless Steel
11	1	TT250-010-15	Seal Sleeve to Shaft O-Ring	Buna-n
14	2	TT250-012-06	Packing Gland Bolt	Steel
15	2	TT250-013-06	Packing Gland	Steel
16	2	TT250-014-06	Packing Gland Lock	Steel
17	1	TT250-015-15	Splasher Ring	Buna-n
18	1	TT250-016-16	Primary Exclusion Seal	NBR Nitrile Rubber and Steel
19	1	TT250-017-16	Primary Grease Seal	NBR Nitrile Rubber and Steel
20	1	TT250-018-04	Primary Bearing Cover	Ductile Iron
21	1	TT250-019-12-150	Primary Bearing Cover Gasket	PTFE/Al550
22	1	TT250-020-06	Primary Bearing	Steel
23	1	TT250-021-08YLPB	Long Body Shaft	Stainless Steel
24	1	TT250-022-15	Pedestal to Secondary Bearing Sleeve O-Ring	Buna-n
25	1	TT250-023-04T	Secondary Bearing Sleeve Stub Shaft	Ductile Iron
27	2	TT250-024-06	Secondary Bearing	Steel
28	1	TT250-025-06	Secondary Bearing Lock Washer	Steel
29	1	TT250-026-06	Secondary Bearing Lock Nut	Steel
30	1	TT250-027-15	Secondary Bearing Sleeve to Secondary Bearing Cover O-Ring	Buna-n
31	1	TT250-028-04	Secondary Bearing Cover	Ductile Iron
32	1	TT250-029-16	Secondary Grease Seal	NBR Nitrile Rubber and Steel
33	1	TT250-030-06	Shaft Key	Steel
37	1	TT006	Pump Serial Plate	Aluminum
38	4	MPH-P-00001	Protruding Head Drive Pin Blind Rivet 1/8"	Aluminum
41	2	MPH-G-00001	Lubricating Grease Nipple, (Zerk) 1/4"	Stainless Steel
42	10	MPH-W-00004	Washer, 3/8"	Steel
43	2	MPH-W-00005	Lock Washer, 3/8"	Steel
44	6	MPH-N-00010	Nylock Hex Nut, 3/8"	Steel
45	2	MPH-S-00007	Hex Head Cap Screw, 3/8"	Steel
46	2	MPH-S-00002	Hex Head Cap Screw, 3/8"	Steel
47	2	MPH-S-00008	Hex Head Cap Screw, 3/8"	Steel
49	2	MPH-N-00007	Hex Jam Nut, 1/2"	Steel
48	8	MPH-W-00002	Lock Washer, 1/2"	Steel
50	6	MPH-B-00010	Hex Bolt, 1/2"	Steel
51	3	MPH-B-00008	Hex Bolt, 1/2"	Steel
54	2	MPH-U-00001	Square Head Pipe Plug, 1/2"	Steel
56	2	MPH-B-00014	Hex Bolt, 3/4"	Steel
57	12	MPH-N-00004	Lock Nut, 3/4"	Steel
58	1	MPH-U-00002	Square Head Pipe Plug, 3/4"	Steel
60	12	MPH-D-00002	Stud, 3/4"	Steel
62	1	TT047	2" Flange Gasket	PTFE/Al550
63	1	TT048	3" Flange Gasket	PTFE/Al550
64	1	TT049	4" Flange Gasket	PTFE/Al550
65	1	TT050	5" Flange Gasket	PTFE/Al550
66	1	MP032713CB-1	Pump Vent, 1/2"	Nylon 6/6

250 Pump Assembly (Long Body) Parts List (Continued)			Description	Material
Item	Qty	Part Number	Description	Material
2 X 3 Housing, Wear Plate and Impeller Selection - Standard or Hardened				
Standard Option				
1	1	TT250-001-23-04	250 Pump RH - 2 X 3 Housing	Ductile Iron
3	1	TT250-003-23-04	250 Pump - 2 X 3 Wear Plate	Ductile Iron
4	1	TT250-004-23-04	250 Pump RH - 2 X 3 X 13 Impeller	Ductile Iron
Hardened Option				
1	1	TT250-001-23-07	250 Pump RH - 2 X 3 Housing	CR26 58HRC
3	1	TT250-003-23-07	250 Pump - 2 X 3 Wear Plate	CR26 58HRC
4	1	TT250-004-23-07	250 Pump RH - 2 X 3 X 13 Impeller	CR26 58HRC
3 X 4 Housing, Wear Plate and Impeller Selection - Standard or Hardened				
Standard Option				
1	1	TT250-001-04	250 Pump RH - 3 X 4 Housing	Ductile Iron
3	1	TT250-003-04	250 Pump - 3 X 4 Wear Plate	Ductile Iron
4	1	TT250-004-04	250 Pump RH - 3 X 4 X 13 Impeller	Ductile Iron
Hardened Option				
1	1	TT250-001-07	250 Pump RH - 3 X 4 Housing	CR26 58HRC
3	1	TT250-003-07	250 Pump - 3 X 4 Wear Plate	CR26 58HRC
4	1	TT250-004-07	250 Pump RH - 3 X 4 X 13 Impeller	CR26 58HRC
4 X 5 Housing, Wear Plate and Impeller Selection - Standard or Hardened				
Standard Option				
1	1	TT250-001-45-04	250 Pump RH - 4 X 5 Housing	Ductile Iron
3	1	TT250-003-45-04	250 Pump - 4 X 5 Wear Plate	Ductile Iron
4	1	TT250-004-45-04	250 Pump RH - 4 X 5 X 14 Impeller	Ductile Iron
Hardened Option				
1	1	TT250-001-45-07	250 Pump RH - 4 X 5 Housing	CR26 58HRC
3	1	TT250-003-45-07	250 Pump - 4 X 5 Wear Plate	CR26 58HRC
4	1	TT250-004-45-07	250 Pump RH - 4 X 5 X 14 Impeller	CR26 58HRC
Seal Selection - Rope Packing or Mechanical				
Rope Packing Seal Option - Standard or Hardened Option				
6#	1	TT250-006-04R	250 Pump Rope Packing Stuffing Box	Ductile Iron
6#	1	TT250-006-07R	250 Pump Rope Packing Stuffing Box	CR26 58HRC
12#	1	TT250-011-11R	250 Pump Rope Packing Kit	Graphite Yarn and Plastic
Mechanical Seal Option - Standard or Hardened Option				
7@	1	TT250-006-04S	250 Pump Mechanical Seal Stuffing Box	Ductile Iron
7@	1	TT250-006-07S	250 Pump Mechanical Seal Stuffing Box	CR26 58HRC
13@	1	TT250-011-10S	250 Pump Mechanical Seal	Steel
59@	1	MPH-P-00002	Slotted Spring Roll Pin, 1/8"	Aluminum
61@	2	TT250-011-1RA	Rope Packing	Graphite Yarn
Motor and Adapter Option				
2&8	1	TT250-023-04U	250 Pump Secondary Bearing Sleeve Motor Mount Adapter	Ductile Iron
3&8	1	TT250-031-04V	250 Pump SAE 4 Bolt Motor Adapter	Ductile Iron
35&8	2	TT250-032-01V	250 Pump SAE 4 Bolt Motor Mount Adapter Hub Access Cover	Aluminum
39&8	4	MPH-W-00003	Lock Washer, 1/4"	Steel
40&8	4	MPH-S-00006	Hex Head Cap Screw, 1/4"	Steel
41&8	3	MPH-G-00001	Lubricating Grease Nipple, (Zerk) 1/4"	Stainless Steel
48&8	8	MPH-W-00012	Lock Washer, 1/2"	Steel
53&8	4	MPH-B-00013	Hexagon Socket Cap Bolt, 1/2"	Steel
36&8	2	TT250-033-04V	250 Pump SAE 4 Bolt Motor Mount Adapter Breakaway Coupling	Steel
52&8	4	MPH-B-00012	Hexagon Socket Bolt, 1/2"	Steel
Options Reference:				
#	Used on Pumps Equipped with Rope Packing Seal Option Only			
@	Used on Pumps Equipped with Mechanical Seal Option Only			
&	Used on Pumps Equipped with Motor Adapter Option Only			